

Greenfields Federation

Littlehaven Infant School and Northolmes Junior School



Growing Together, Aiming High

Our vision at Greenfields Federation is that we will work together as a community to ensure all pupils achieve their best and everyone feels valued and respected. We will prioritise the well-being of our children and have high expectations for behaviour. We will create an inspiring and motivating learning environment where all children can deepen their knowledge, acquire new skills and develop as well-rounded, happy, confident individuals.

Medical Conditions and Managing Medicines Policy

Review date: September 2023
Ratified by the Governing Body:
Next review: July 2024 (or before if guidance changes)

This policy should be read alongside the statutory guidance 'Supporting pupils at school with medical conditions' (updated August 2017) and Greenfield Federation's 'Children with Health Needs Who Cannot Attend School' Policy'

Introduction

Greenfields Federation is an inclusive community that supports and welcomes pupils with medical conditions.

- Greenfields Federation is welcoming and supportive of pupils with medical conditions. It provides children with medical conditions with the same opportunities and access to activities (both school based and out-of-school) as other pupils. No child will be denied admission or prevented from taking up a place in this school because arrangements for their medical condition have not been made.
- Greenfields Federation will listen to the views of pupils and parents/carers/carers.
- Pupils and parents/carers/carers feel confident in the care they receive from this school and the level of that care meets their needs.
- Staff understand the medical conditions of pupils at this school and that they may be serious, adversely affect a child's quality of life and impact on their ability and confidence
- All staff understand their duty of care to children and young people and know what to do in the event of an emergency.
- The whole school and local health community understand and support the medical conditions policy.
- Greenfields Federation understands that all children with the same medical condition will not have the same needs, our school will focus on the needs of each individual child.
- Greenfields Federation recognises its duties as detailed in Section 100 of the Children and Families Act 2014. Some children with medical conditions may be considered to be disabled under the definition set out in the Equality Act 2010. Where this is the case, this school complies with their duties under that Act. Some may also have special educational needs (SEN) and may have an Education, Health and Care (EHC) plan which brings together health and social care needs, as

well as their special educational provision. For children with SEN, this policy should be read in conjunction with the Special educational needs and disability (SEND) code of practice and the school's SEN Policy and SEN Information Report.

This school's medical conditions policy is drawn up in consultation with a wide range of local key stakeholders within both the school and health settings.

- Stakeholders include pupils, parent/carers, school nurse, school staff, governors, and relevant local health specialist services.

The medical conditions policy is supported by a clear communication plan for staff, parent/carers/carers and other key stakeholders to ensure its full implementation.

- Pupils, parents/carers, relevant local healthcare staff, and other external stakeholders are informed of and reminded about the medical conditions policy through clear communication channels.

All staff understand and are trained in what to do in an emergency for children with medical conditions at this school.

- All school staff, including temporary or supply staff, are aware of the medical conditions at this school and understand their duty of care to pupils in an emergency.
- All staff receive training in what to do in an emergency and this is refreshed at least once a year.
- All children with medical conditions that are complex, long-term or where there is a high risk that emergency intervention will be required at this school have an individual healthcare plan (IHP) (Appendix 2), which explains what help they need in an emergency. The IHP will accompany a pupil should they need to attend hospital. Parental permission will be sought and recorded in the IHP for sharing the IHP within emergency care settings.
- Greenfields Federation makes sure that all staff providing support to a pupil have received suitable training and ongoing support to ensure that they have confidence to provide the necessary support and that they fulfil the requirements set out in the pupil's IHP. This should be provided by the specialist nurse/school nurse/other suitably qualified healthcare professional and/or parent/carer. The specialist nurse/school nurse/other suitably qualified healthcare professional will confirm their competence and this school keeps an up to date record of all training undertaken and by whom.

All staff understand and are trained in the school's general emergency procedures.

- All staff, including temporary or supply staff should be aware of the content of this policy, know what action to take in an emergency and receive updates at least yearly. School nurses will provide annual training for common conditions e.g. asthma, allergies, epilepsy and diabetes¹ or this will be completed online when a school nurse is not available to provide this.
- If a pupil needs to attend hospital, a member of staff (preferably known to the pupil) will stay with them until a parent/carer arrives, or accompany a child taken to hospital by ambulance. They will not take pupils to hospital in their own car.

¹ For pupils requiring insulin injections/insulin via pumps or blood glucose monitoring in schools the Paediatric Diabetes Team will provide this level of training and education.

Greenfields Federation has clear guidance on providing care and support and administering medication at school

The lead for the management of medicines at Littlehaven Infants and Northolmes Juniors is Headteacher, Miss S. Cox (in her absence Mrs K. Saunderson, Assistant Headteacher). In their duties staff will be guided by their training, this policy and related procedures.

Pain relief protocol for the administration of paracetamol

Greenfields Federation understands the importance of medication being taken and care received as detailed in the pupil's IHP. If a request for non-prescribed pain relief is made by a pupil or carer/staff (advocate for a non-verbal/non-communicating pupil) before 12pm:

- The school will contact the parent/guardian to confirm that a dose of pain relief (Paracetamol) along with any other pain relief medication has NOT been administered before school. If a dose of pain relief has not been administered in the past 4 hours, the school will, with parental consent, administer 1 dose. Please note that Ibuprofen is not administered at Greenfields Federation due to the age of the children.
- If the school cannot contact the parent/guardian and therefore cannot confirm if pain relief (Paracetamol) was administered before school, then the school will refuse to administer pain relief.
- If the parent/guardian confirms a dose of pain relief has been administered before school, school will not administer paracetamol until 4 hours have elapsed since the last dose. Please note that no more than 4 doses can be administered in 24 hours

Mild Allergic Reaction

- Non-prescription antihistamine will, with parental consent, be administered for symptoms of mild allergic reaction (i.e. itchy eyes or skin, rash or/and redness of the skin or eyes), the pupil must be monitored for signs of further allergic reaction.
- Some antihistamine medication can cause drowsiness and therefore the school will consider if it is necessary for pupils to avoid any contact hazardous equipment after administration of the medication i.e. P.E. Science, Design and Technology.

Hay fever

- Parent(s)/guardian(s) will be expected to administer a dose of antihistamine to their child before school for the treatment of hay fever. The school will only administer antihistamine for symptoms of allergic reaction and not as a precautionary measure.

Anaphylaxis

- Every effort will be made by the school to identify and reduce the potential hazards/ triggers that can cause an allergic reaction to pupils diagnosed with anaphylaxis within the school population.
- The school complies with the School Nursing Service recommend that all staff are trained in the administration of auto injectors and that training is renewed annually.
- In accordance with the Medicines and Healthcare Products Regulatory Agency (MHRA) advice the school will ask parent/ guardian(s) to provide 2 auto-injectors for school use wherever possible. Parents are responsible for this medication being in date and the school will communicate with the parents if new medication is required and a record of these communications will be kept.

Severe Allergic Reaction

- Where a GP/Consultant has recommended or prescribed antihistamine as an initial treatment for symptoms of allergic reaction this will be detailed on the pupils IHP. The school will administer 1 standard dose of antihistamine (appropriate to age and weight of the pupil) and it is very important that symptoms are monitored for signs of further allergic reaction. During this time pupils must **NEVER** be left alone and should be observed at all times.

Asthma

- The school recognises that pupils with asthma need access to relief medication at all times. The school will manage asthma in school as outlined in the Asthma Toolkit. Pupils with asthma will be required to have an emergency inhaler and a spacer (if prescribed) in school. The school will ask the pupils parent or guardian to provide a second inhaler if possible. Parents are responsible for this medication being in date and the school will communicate with the parents if new medication is required and a record of these communications will be kept.
- Greenfields Federation has chosen to hold an emergency salbutamol inhaler for use by pupils who have been prescribed a reliever inhaler and for whom parental consent for its use has been obtained (see Appendix 4 and 5 for further information)
- The school inhaler will only be used in an emergency and will always be used with a spacer as outlined in the Asthma Toolkit.

If the emergency inhaler/spacer has to be used for a child, the parent/guardian will be expected to provide a replacement for school.

The school will develop IHP's for those pupils with severe asthma, and complete the Individual Protocol for pupils with mild asthma.

- Medication will only be administered when it would be detrimental to a child's health or school attendance not to do so.
- Staff can administer non-prescription medicines for a maximum of two days and this can then not be repeated before two weeks. This can only be done twice in a term and further medical advice must be sought where needed.
- Pupils are not allowed to bring lip balms, hand wash (including sanitiser) or hand creams into school unless there is a medical need, and/or specific medication has been prescribed.
- Greenfields Federation will make sure that there are sufficient members of staff who have been trained to administer the medication and meet the care needs of an individual child. This includes escort staff for home to school transport if necessary. This school will ensure that there are sufficient numbers of staff trained to cover any absences, staff turnover and other contingencies. This school's governing body has made sure that there is the appropriate level of insurance and liability cover in place.²

² Staff who follow the procedures outlined in this policy and who undertake tasks detailed in the RMP Medical Malpractice Treatment Table are covered under WSCC insurance policies. The medical audit is available to view on West Sussex Services for Schools under 'guide to insurance for schools'.

Claims received in respect of medical procedures not covered by the insurers will be considered under the Council's insurance fund.

- This school will not give medication (prescription or non-prescription) to a child under 16 without a parent's written consent except in exceptional circumstances, and every effort will be made to encourage the pupil to involve their parent/carer, while respecting their confidentiality.
- When administering medication, for example pain relief, this school will check the maximum dosage and when the previous dose was given. Parents/carers will be informed.
- This school will make sure that a trained member of staff is available to accompany a pupil with a medical condition on an off-site visit, including overnight stays.
- Parents/carers/carers at this school understand that they should let the school know immediately if their child's needs change.
- If a pupil misuses their medication, or anyone else's, their parent/carer is informed as soon as possible and the school's disciplinary procedures are followed.

Greenfields Federation has clear guidance on the storage of medication and equipment at school.

- The Federation makes sure that all staff understand what constitutes an emergency for an individual child and makes sure that emergency medication/equipment, eg asthma inhalers, epi-pens etc are readily available wherever the child is in the school and on off-site activities, and are not locked away.
- Pupils may carry their own medication/equipment if age appropriate, or they should know exactly where to access it. Those pupils deemed competent to carry their own medication/equipment with them will be identified and recorded through the pupil's IHP in agreement with parents/carers.
- The school will store controlled drugs securely in a non-portable container, with only named staff having access. Staff at this school can administer a controlled drug to a pupil once they have had specialist training.
- The Federation will make sure that all medication is stored safely, and that pupils with medical conditions know where they are at all times and have access to them immediately. Under no circumstances will medication be stored in first aid boxes.
- Greenfields Federation will only accept medication that is in date, labelled and in its original container including prescribing instructions for administration. The exception to this is insulin, which though must still be in date, will generally be supplied in an insulin injector pen or a pump.
- Parents/carers/carers are asked to collect all medications/equipment at the end of the school term, and to provide new and in-date medication at the start of each term.
- The schools will dispose of needles and other sharps in line with local policies. Sharps boxes (as required) will be kept securely at school and will accompany a child on off-site visits. They will be collected and disposed of in line with local authority procedures.

This school has clear guidance about record keeping.

- As part of the school's admissions process and annual data collection exercise parents/carers are asked if their child has any medical conditions. These procedures also cover transitional arrangements between schools.
- Greenfields Federation uses an IHP to record the support an individual pupil needs around their medical condition. The IHP is developed with the pupil (where appropriate), parent/carer, designated named member of school staff, specialist nurse (where appropriate) and relevant healthcare services. Where a child has SEN but does not have a statement or EHC plan, their special educational needs are mentioned in their IHCP. Appendix 2 is used to identify and agree the support a child needs and the development of an IHCP.

- This school has a centralised register of IHPs, and an identified member of staff has the responsibility for this register.
- IHPs are regularly reviewed, at least every year or whenever the pupil's needs change.
- The pupil (where appropriate) parents/carers, specialist nurse (where appropriate) and relevant healthcare services hold a copy of the IHP. Other school staff are made aware of and have access to the IHP for the pupils in their care.
- Greenfields Federation makes sure that the pupil's confidentiality is protected.
- Greenfields Federation seeks permission from parents/carers before sharing any medical information with any other party.
- This school keeps an accurate record of all medication administered, including the dose, time, date and supervising staff.

Greenfields Federation ensures that the whole school environment is inclusive and favourable to pupils with medical conditions. This includes the physical environment, as well as social, sporting and educational activities.

- Greenfields Federation is committed to providing a physical environment accessible to pupils with medical conditions and pupils are consulted to ensure this accessibility. This school is also committed to an accessible physical environment for out-of-school activities.
- Greenfields Federation makes sure the needs of pupils with medical conditions are adequately considered to ensure their involvement in structured and unstructured activities, extended school activities and residential visits.
- All staff are aware of the potential social problems that pupils with medical conditions may experience and use this knowledge, alongside the school's anti bullying policy, to help prevent and deal with any problems. They use opportunities such as PSHE and science lessons to raise awareness of medical conditions to help promote a positive environment.
- Greenfields Federation understands the importance of all pupils taking part in off site visits and physical activity and that all relevant staff make reasonable and appropriate adjustments to such activities in order they are accessible to all pupils. This includes out-of-school clubs and team sports. Risk assessments will be conducted as part of the planning process to take account of any additional controls required for individual pupil needs.
- Greenfields Federation understands that all relevant staff are aware that pupils should not be forced to take part in activities if they are unwell. They should also be aware of pupils who have been advised to avoid/take special precautions during activity, and the potential triggers for a pupil's medical condition when exercising and how to minimise these.

Greenfields Federation makes sure that pupils have the appropriate medication/equipment/food with them during physical activity and offsite visits.

- Greenfields Federation makes sure that pupils with medical conditions can participate fully in all aspects of the curriculum and enjoy the same opportunities at school as any other child, and that appropriate adjustments and extra support are provided.
- All school staff understand that frequent absences, or symptoms, such as limited concentration and frequent tiredness, may be due to a pupil's medical condition.
- Greenfields Federation will not penalise pupils for their attendance if their absences relate to their medical condition.
- Greenfields Federation will refer pupils with medical conditions who are finding it difficult to keep up educationally to the Miss Lyndsay Woodland, Assistant Headteacher/ Inclusion Lead who will liaise with the pupil (where appropriate), parent/carer and the pupil's healthcare professional.

- Pupils at this school learn what to do in an emergency.
- This school makes sure that a risk assessment is carried out before any out-of-school visit, including work experience and educational placements. The needs of pupils with medical conditions are considered during this process and plans are put in place for any additional medication, equipment or support that may be required.

Greenfield's Federation is aware of the common triggers that can make common medical conditions worse or can bring on an emergency. The Federation actively works towards reducing or eliminating these health and safety risks and has a written schedule of reducing specific triggers to support this.

- Greenfields Federation is committed to identifying and reducing triggers both at school and on out-of-school visits.
- School staff have been given training and written information on medical conditions which includes avoiding/reducing exposure to common triggers.
- The IHP details an individual pupil's triggers and details how to make sure the pupil remains safe throughout the whole school day and on out-of-school activities. Risk assessments are carried out on all out-of-school activities, taking into account the needs of pupils with medical needs.
- Greenfields Federation reviews all medical emergencies and incidents to see how they could have been avoided, and changes school policy according to these reviews.

Each member of Greenfields Federations and health community knows their roles and responsibilities in maintaining and implementing an effective medical conditions policy.

- Greenfields Federation works in partnership with all relevant parties including the pupil (where appropriate), parent/carer, school's governing body, all school staff, employers and healthcare professionals to ensure that the policy is planned, implemented and maintained successfully.
- Key roles and responsibilities are outlined in Appendix 1.

Managing Medicines for all Pupils

The medical conditions policy is regularly reviewed, evaluated and updated. Updates are produced every year.

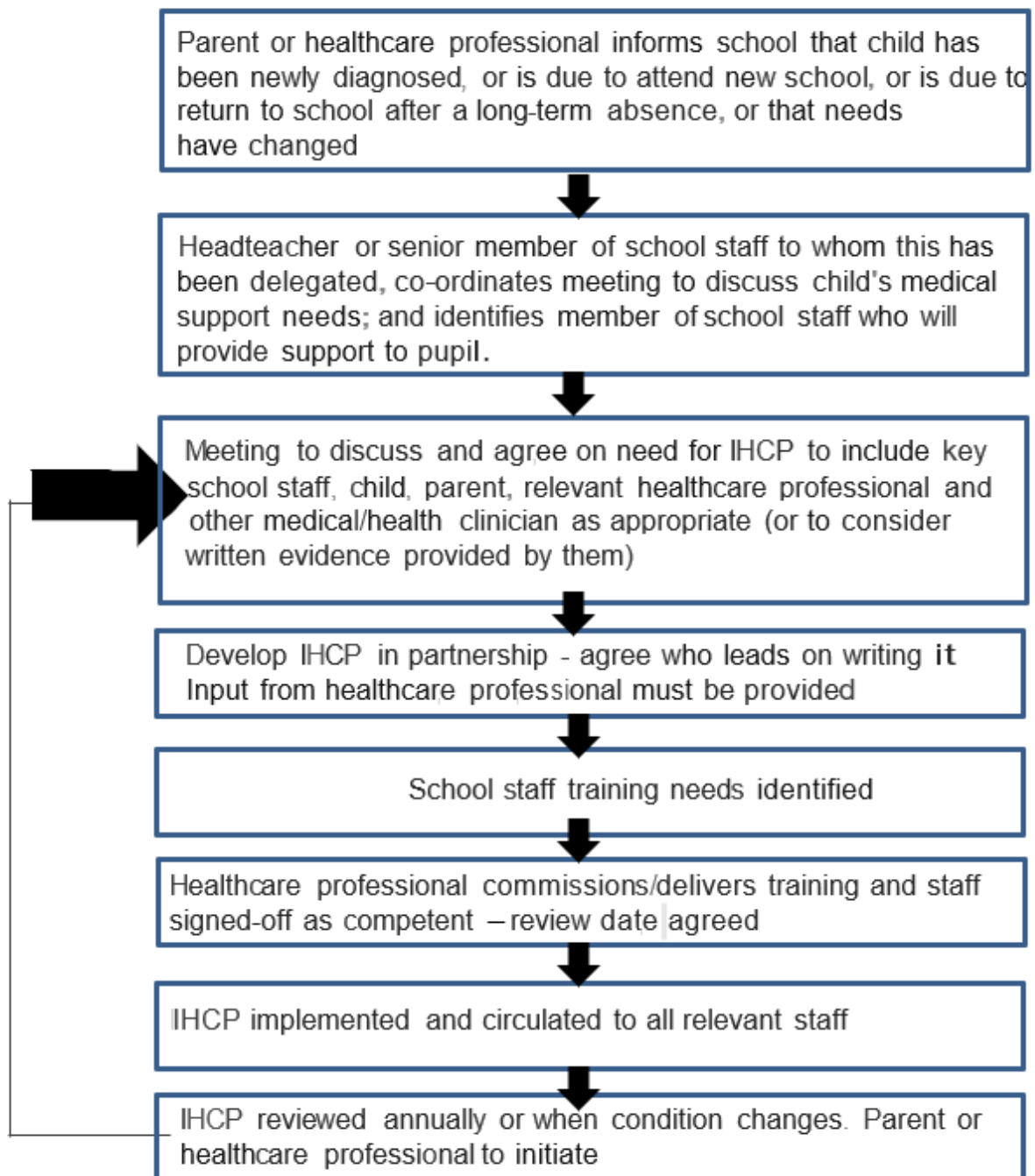
- In evaluating the policy, this school seeks feedback from key stakeholders including pupils, parents/carers, school nurses, specialist nurses and other relevant healthcare professionals, school staff, local emergency care services and governors. The views of pupils with medical conditions are central to the evaluation process.

Complaints

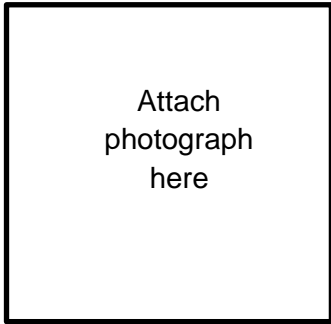
Issuing arising from the medical treatment of a pupil whilst in school should in the first instance be directed to the Headteacher. If the issue cannot easily be resolved the Headteacher will inform the governing body who will seek resolution.

Appendices

Appendix 1: Model process for developing individual healthcare plans



Appendix 2: Individual healthcare plan template (IHCP)



Name of school/setting

Child's name

Group/class/form

Date of birth

Child's address

Medical diagnosis or condition

Date

Review date

Family Contact Information

Name

Relationship to child

Phone no. (work)

(home)

(mobile)

Name

Relationship to child

Phone no. (work)

(home)

(mobile)

Clinic/Hospital Contact

Name

Phone no.

G.P.

Name

Phone no.

Who is responsible for providing support in school

--

Describe medical needs and give details of child's symptoms, triggers, signs, treatments, facilities, equipment or devices, environmental issues etc.

--

Name of medication, dose, method of administration, when to be taken, side effects, contra-indications, administered by/self-administered with/without supervision

--

Daily care requirements

--

Specific support for the pupil's educational, social and emotional needs

--

Arrangements for school visits/trips etc

--

Other information

--

Describe what constitutes an emergency, and the action to take if this occurs

Who is responsible in an emergency (*state if different for off-site activities*)

Plan developed with

Staff training needed/undertaken – who, what, when

The above information is, to the best of my knowledge, accurate at the time of writing and I give consent to school/setting staff administering medicine in accordance with the school/setting policy. I will inform the school/setting immediately, in writing, if there is any change in dosage or frequency of the medication or if the medicine is stopped. I agree that my child's medical information can be shared with school staff responsible for their care.

Signed by parent or guardian

Print name

Date

Review date

Copies to:

Appendix 3: Roles and responsibilities

Governing bodies must make arrangements to support pupils with medical conditions in school, including making sure that a policy for supporting pupils with medical conditions in school is developed and implemented. They should ensure that pupils with medical conditions are supported to enable the fullest participation possible in all aspects of school life. Governing bodies should ensure that sufficient staff have received suitable training and are competent before they take on responsibility to support children with medical conditions. They should also ensure that any members of school staff who provide support to pupils with medical conditions are able to access information and other teaching support materials as needed.

The Headteacher should ensure that their school's policy is developed and effectively implemented with partners. This includes ensuring that all staff are aware of the policy for supporting pupils with medical conditions and understand their role in its implementation. Headteachers should ensure that all staff who need to know are aware of the child's condition. They should also ensure that sufficient trained numbers of staff are available to implement the policy and deliver against all individual healthcare plans, including in contingency and emergency situations. Headteachers have overall responsibility for the development of individual healthcare plans. They should also make sure that school staff are appropriately insured and are aware that they are insured to support pupils in this way. They should contact the school nursing service in the case of any child who has a medical condition that may require support at school, but who has not yet been brought to the attention of the school nurse.

School staff: any member of school staff may be asked to provide support to pupils with medical conditions, including the administering of medicines, although they cannot be required to do so. Although administering medicines is not part of teachers' professional duties, they should take into account the needs of pupils with medical conditions that they teach. School staff should receive sufficient and suitable training and achieve the necessary level of competency before they take on responsibility to support children with medical conditions. Any member of school staff should know what to do and respond accordingly when they become aware that a pupil with a medical condition needs help.

School nurse: every school has access to school nursing services. They are responsible for notifying the school when a child has been identified as having a medical condition which will require support in school. Wherever possible, they will do this before the child starts at the school. They would not usually have an extensive role in ensuring that schools are taking appropriate steps to support children with medical conditions, but may support staff on implementing a child's individual healthcare plan and provide advice and liaison, for example on training. School nurses can liaise with lead clinicians locally on appropriate support for the child and associated staff training needs - for example, there are good models of local specialist nursing teams offering training to local school staff, hosted by a local school. Community nursing teams will also be a valuable potential resource for a school seeking advice and support in relation to children with a medical condition.

Other healthcare professionals including GPs, paediatricians, nurse specialists/community paediatric nurses should notify the school nurse and work jointly when a child has been identified as having a medical condition that will require support at school. They may provide advice on developing healthcare plans. Anyone dealing with the medical care of a pupil in school should contact the named school nurse for that school to ensure a coordinated approach.

Pupils with medical conditions will often be best placed to provide information about how their condition affects them. They should be fully involved in discussions about their medical support needs and contribute as much as possible to the development of, and comply with, their individual healthcare plan. Other pupils will often be sensitive to the needs of those with medical conditions.

Parents/carers should provide the school with sufficient and up-to-date information about their child's medical needs. They may in some cases be the first to notify the school that their child has a medical condition. Parents/carers are key partners and should be involved in the development and review of their child's individual healthcare plan, and may be involved in its drafting. They should carry out any action they have agreed to as part of its implementation, eg provide medicines and equipment and ensure they or another nominated adult are contactable at all times.

Appendix 4

The school has chosen to hold an emergency salbutamol inhaler for use by pupils who have been prescribed a reliever inhaler and for whom written parental consent for its use has been obtained.

The protocol for the use of this inhaler is detailed below, following the Department of Health Guidance on the use of emergency salbutamol inhalers in schools.

https://www.gov.uk/government/uploads/system/uploads/attachment_data/file/360585/guidance_on_use_of_emergency_inhalers_in_schools_October_2014.pdf

The use, storage, care and disposal of the inhaler and spacers will follow the school's policy on supporting pupils with medical conditions. Specific guidance on storage and care is provided on page 12 of the Department of Health Guidance on the use of emergency salbutamol inhalers in schools.

The school hold a register of children prescribed an inhaler and this list is kept with the emergency inhaler.

Written parental consent is sought for the use of the emergency inhaler. Where consent is received the use of the emergency inhaler will be included in the pupils IHP.

Parents/carers will be informed if their child has used the emergency inhaler.

Appendix 5

Permission Forms: Greenfields Federation has chosen to adopt the West Sussex Permissions Forms and adapt as below

Extract from Consents Form

Ad-hoc Medicines		
Administer paracetamol	Yes	No
Administer anti-histamine	Yes	No
<i>if my child develops the relevant symptoms during the day. Note: Our Medicines policy is available on our website.</i>		

Extract from Admission Form – Confidential Information

MEDICAL DETAILS

Has your child been diagnosed with or are you concerned about any of the following:

Condition	Yes	No	Details, Medication or Concern
Asthma N.B. Parents of pupils with mild asthma must also sign an asthma protocol form (Template 2 in Appendix 1) available from the school.			
Allergies/Anaphylaxis including Food Allergies N.B. Parents of pupils prescribed an auto-injector must also sign the relevant auto-injector protocol form (Template 3, 4, 5 or 6 in Appendix 1) available from the school.			
Epilepsy			
Diabetes			

Other Medical	Do they have any known medical condition other than the above?	YES/NO
	Do they require attention in school e.g. diet/medication?	YES/NO
	Have they ever been admitted to hospital?	YES/NO
Sight	Do they have a known visual problem?	YES/NO
	Do they wear glasses?	YES/NO
Hearing	Do they have hearing problems?	YES/NO
	Do they have a history of intermittent hearing problems?	YES/NO
Manual	Are they right-handed/left-handed/undecided?	

If 'YES' to any of the above questions, further details should be recorded below:

--

Is your child taking regular medication for any condition other than those listed above? Continue on a separate sheet if necessary.

Condition	Medication, emergency requirements

Record of ALL medicine administered to an individual child

(except controlled medicines)

Child's Name _____

Date	Time	Dose given	Name of medicine	Signature of staff and print name	Witnessed by	Reaction/Comments

Parental consent to administer medication

(where an Individual Healthcare Plan or Education Healthcare Plan is not required)

The school/setting will not give your child medicine unless you complete and sign this form, and the school or setting has a policy that the staff can administer medicine.

Date for review to be initiated by	
Name of child	
Date of birth	
Group/class/form	
Medical condition or illness	

Medicine

Name/type of medicine <i>(as described on the container)</i>	
Expiry date	
Dosage and method	
Timing	
Special precautions/other instructions	
Are there any side effects that the school/setting needs to know about?	
Self-administration – y/n	
Procedures to take in an emergency	

NB: Medicines must be in the original container as dispensed by the pharmacy and the manufacturer's instructions and/or Patient Information Leaflet (PIL) must be included

Contact Details

Name	
Daytime telephone no.	
Relationship to child	
Address	
I understand that I must deliver the medicine personally to	[agreed member of staff or school location]

The above information is, to the best of my knowledge, accurate at the time of writing and I give consent to school/setting staff administering medicine in accordance with the school/setting policy. I confirm that this medication has been administered to my child in the past without adverse effect. I will inform the school/setting immediately, in writing, if there is any change in dosage or frequency of the medication or if the medicine is stopped.

Signature(s): _____

Date: _____

Print name: _____

Record of medicine administered to an individual child for Controlled Drugs

Name of school/setting	
Name of child	
Date medicine provided by parent	
Group/class/form	
Quantity received	
Name and strength of medicine	
Expiry date	
Quantity returned	
Dose and frequency of medicine	

Staff signature _____

Signature of parent _____

Date			
Time given			
Dose given			
Controlled drug stock			
Name of member of staff			
Staff initials			

Witnessed by _____

Date _____

Individual protocol for Mild Asthma

Please complete the questions below, sign this form and return without delay.

CHILD'S NAME.....

D.O.B.

Class

Contact Information

Name					Relationship to pupil			
Phone numbers	Work		Home		Mobile		Other	

If I am unavailable please contact:

Name					Relationship to pupil			
Phone numbers	Work		Home		Mobile		Other	

- Does your child need an inhaler in school? Yes/No (delete as appropriate)
- Please provide information on your child's current treatment. (Include the name, type of inhaler, the dose and how many puffs?)

.....
Do they have a spacer?

.....

- What triggers your child's asthma?

.....

4. It is advised that pupils have a spare inhaler in school. Spare inhalers may be required in the event that the first inhaler runs out is lost or forgotten. Inhalers must be clearly labelled with your child's name and must be replaced before they reach their expiry date. The school will also keep a salbutamol inhaler for emergency use.

Please delete as appropriate:

- My child carries their own inhaler YES/NO
- My child **REQUIRES/DOES NOT REQUIRE** a spacer and I have provided this to the school office
- I am aware I am responsible for supplying the school with in date inhaler(s)/spacer for school use and will supply this/these as soon as possible. YES/NO

- Does your child need a blue inhaler before doing exercise/PE? If so, how many puffs?

.....

6. Do you give consent for the following treatment to be given to your child as recognised by Asthma Specialists in an emergency? - Yes/No (delete as appropriate)

- Give **6 puffs of the blue inhaler via a spacer**
- Reassess after 5 minutes
- If the child still feels wheezy or appears to be breathless they should have a further **4 puffs of the blue inhaler via a spacer**
- Reassess after 5 minutes
- **If their symptoms are not relieved with 10 puffs of blue inhaler then this should be viewed as a serious attack:**
- **CALL AN AMBULANCE and CALL PARENT**
- **While waiting for an ambulance continue to give 10 puffs of the reliever inhaler every few minutes**

Please sign below to confirm you agree the following:

- I agree to ensure that my child has in-date inhalers and a spacer (if prescribed) in school.
- I give consent for the school to administer my child’s inhaler in accordance with the emergency treatment detailed above.
- I agree that the school can administer the school emergency salbutamol inhaler if required.
- I agree that my child’s medical information can be shared with school staff responsible for their care.

Signed:.....Print name..... Date.....
I am the person with parental responsibility

Please remember to inform the school if there are any changes in your child’s treatment or condition. Thank you

Parental Update (only to be completed if your child no longer has asthma)	
My child no longer has asthma and therefore no longer requires an inhaler in school or on school visits.	
Signed <i>I am the person with parental responsibility</i>	Date

For office use:

	Provided by parent/school	Location (delete as appropriate)	Expiry date	Date of phone call requesting new inhaler	Date of letter (attach copy)
1 st inhaler		With pupil/In classroom			
2 nd inhaler Advised		In office/first aid room			
Spacer (if required)					
Record any further follow up with the parent/carer:					

Individual protocol for Antihistamine as an initial treatment protocol for mild allergic reaction

CHILD'S NAME.....

D.O.B.

Class

Nature of Allergy:

.....

Contact Information

Name					Relationship to pupil		
Phone numbers	Work		Home		Mobile		Other

If I am unavailable please contact:

Name					Relationship to pupil		
Phone numbers	Work		Home		Mobile		Other

GP

Name:

Phone No:

Address:

Clinic/ Hospital Contact

Name:

Phone No:

Address:

MEDICATION - Antihistamine

Name of antihistamine & expiry date

.....

It is the parents responsibility to ensure the Antihistamine has not expired

Dosage & Method: **As prescribed on the container.**

It is the schools responsibility to ensure this care plan is reviewed and parents inform the school of any changes in condition or treatment.

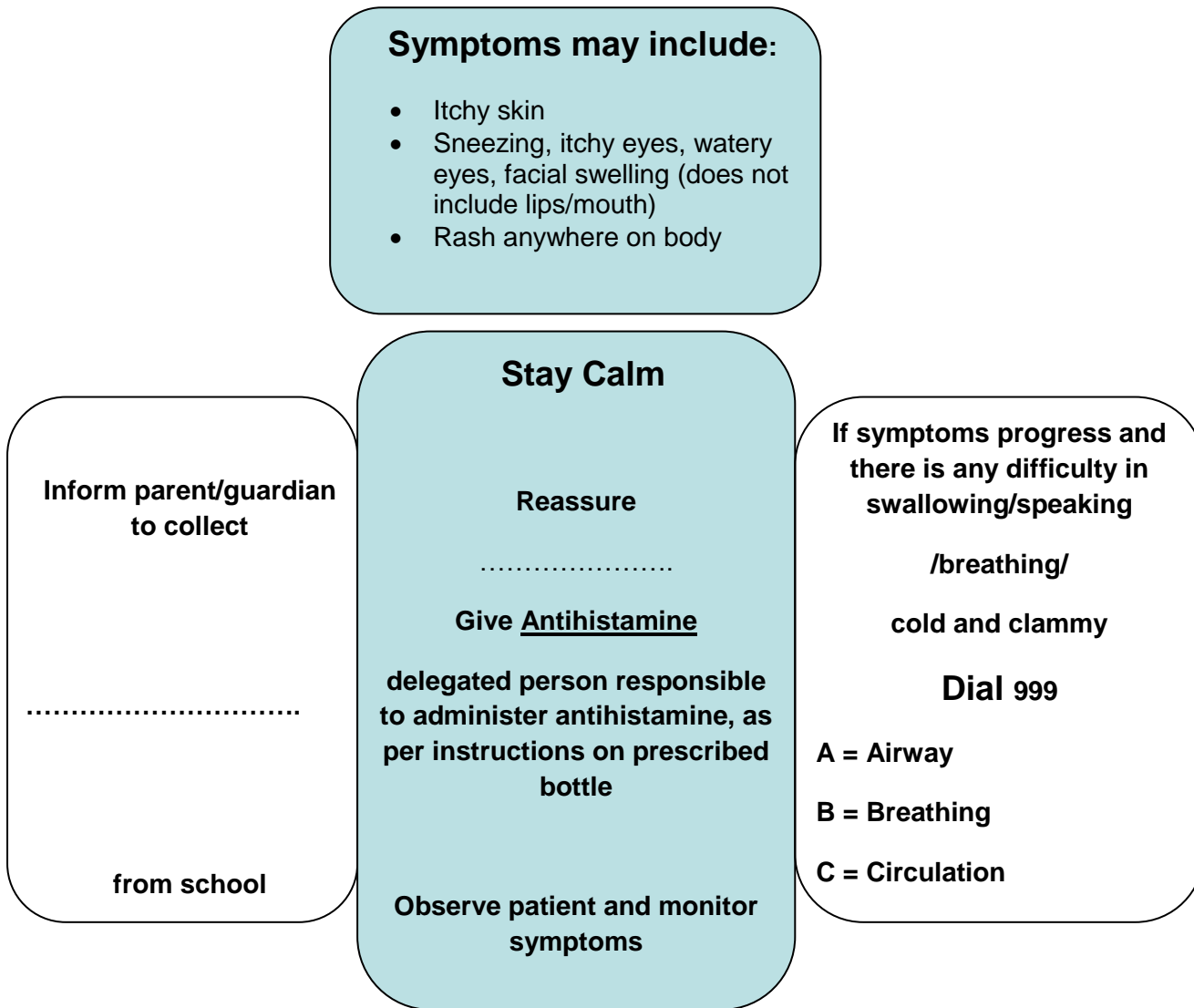
Agreed by: School Representative.....Date.....

I agree that the medical information contained in this plan may be shared with individuals involved with my child's care and education, and I give my consent to the school to administer anti-histamine as part of my child's treatment for anaphylaxis. I confirm I have administered this medication in the past without adverse effect.

Signed:.....Print name.....Date.....

I am the person with parental responsibility

Individual protocol for using Antihistamine (e.g. Piriton)



If symptoms progress Dial 999 - Telephone for an ambulance

You need to say: "I have a child in anaphylactic shock".

Give school details:

Give details: Pupils name has a severe allergy and what has happened.

DO NOT PUT THE PHONE DOWN UNTIL YOU ARE SURE ALL THE NECESSARY INFORMATION HAS BEEN GIVEN

Someone to wait by the school gate to direct the ambulance staff straight to the child.

Individual protocol for an Emerade adrenaline auto injector

CHILD'S NAME.....

D.O.B.

Class

Nature of Allergy:

.....
Contact Information

Name					Relationship to pupil		
Phone numbers	Work		Home		Mobile		Other

If I am unavailable please contact:

Name					Relationship to pupil		
Phone numbers	Work		Home		Mobile		Other

GP

Name:

Phone No:

Address:

Clinic/ Hospital Contact

Name:

Phone No:

Address:

MEDICATION Emerade

Name on Emerade & expiry date:

.....
 It is the parents responsibility to supply 2 EMERADE auto injectors and to ensure they have not expired

Dosage & Method: **1 DOSE INTO UPPER OUTER THIGH**

The school staff will take all reasonable steps to ensure does not eat any food items unless they have been prepared / approved by parents

It is the schools responsibility to ensure this care plan is reviewed and parents inform the school of any changes in condition or treatment.

Agreed by: School Representative.....Date.....

I agree that the medical information contained in this plan may be shared with individuals involved with my child's care and education.

I give my consent for the school to administer my child's Emerade or the school held adrenaline auto-injector (if my child's pen is lost/forgotten or malfunctions) to be administered in an emergency as detailed in this plan

Signed:.....Print name..... Date.....

I am the person with parental responsibility

Individual protocol for.....using an EMERADE (Adrenaline auto injector)

Symptoms may include:

- Difficulty in swallowing / speaking / breathing
- Wheezy / irregular breathing / excessive coughing
- Hoarseness
- Nettle rash (hives) anywhere on body
- Sense of impending doom
- Swelling of throat and mouth
- Abdominal pain, nausea & vomiting
- Feeling of weakness (BP drops)
- Collapse & unconsciousness
- Cold and clammy

Give EMERADE first

then dial 999

Administer Emerade

in the upper outer thigh

Remove cap protecting the needle

Hold Emerade against upper outer thigh and press it against patients leg. You will hear a click when the adrenaline is injected.

Hold Emerade in place

for 10 seconds.

Can be given through clothing, but not

Stay Calm

Reassure.....

**One member of staff to
Dial 999**

Call Parents

Reassure

Telephoning for an ambulance

You need to say: "I have a child in anaphylactic shock".

Give school details:

Give details: Childs name has a severe allergy and what has happened.

**DO NOT PUT THE PHONE DOWN UNTIL YOU ARE SURE ALL THE NECESSARY
INFORMATION HAS BEEN GIVEN**

Someone to wait by the school gate to direct the ambulance staff straight to the child.

Individual protocol for an Epipen adrenaline auto injector

CHILD'S NAME.....

D.O.B.

Class

Nature of Allergy:

.....

Contact Information

Name					Relationship to pupil		
Phone numbers	Work		Home		Mobile		Other

If I am unavailable please contact:

Name					Relationship to pupil		
Phone numbers	Work		Home		Mobile		Other

GP

Name:

Phone No:

Address:

Clinic/ Hospital Contact

Name

Phone No:

Address:

MEDICATION EPIPEN

Name on EPIPEN & Expiry date:

It is the parents responsibility to supply 2 EPIPEN auto injectors and to ensure they have not expired

Dosage & Method: **1 DOSE INTO UPPER OUTER THIGH**

The school staff will take all reasonable steps to ensure does not eat any food items unless they have been prepared / approved by parents

It is the schools responsibility to ensure this care plan is reviewed and parents inform the school of any changes in condition or treatment.

Agreed by: School Representative.....Date.....

I agree that the medical information contained in this plan may be shared with individuals involved with my child's care and education.

I give my consent for the school to administer my child's Epipen or the school held adrenaline auto-injector (if my child's pen is lost/forgotten or malfunctions) to be administered in an emergency as detailed in this plan

Signed:.....Print name..... Date.....

I am the person with parental responsibility

Individual protocol for using an EpiPen (Adrenaline Auto injector)

Symptoms may include:

- Difficulty in swallowing / speaking / breathing
- Wheezy / irregular breathing / excessive coughing
- Hoarseness
- Nettle rash (hives) anywhere on body
- Sense of impending doom
- Swelling of throat and mouth
- Abdominal pain, nausea & vomiting
- Feeling of weakness (BP drops)
- Collapse & unconsciousness
- Cold and clammy

Stay Calm

Reassure

**One member of staff to
Dial 999**

REMEMBER

Give EPIPEN first

then dial 999

Administer EpiPen in the upper outer thigh

Remove grey safety cap

Hold epiPen with black tip
downwards against thigh

jab firmly.

Hold epiPen in place

for 10 seconds

Can be given through clothing, but
not very thick clothing.

Call Parents

Reassure

.....

Telephoning for an ambulance

You need to say: "I have a child in anaphylactic shock".

Give school details:

Give details: Child's name has a severe allergy and what has happened.

**DO NOT PUT THE PHONE DOWN UNTIL YOU ARE SURE ALL THE NECESSARY
INFORMATION HAS BEEN GIVEN**

Someone to wait by the school gate to direct the ambulance staff straight to the child.

Individual protocol for a Jext pen adrenaline auto injector

CHILD'S NAME.....

D.O.B.

Class

Nature of Allergy:

.....

Contact Information

Name					Relationship to pupil		
Phone numbers	Work		Home		Mobile		Other

If I am unavailable please contact:

Name					Relationship to pupil		
Phone numbers	Work		Home		Mobile		Other

GP

Name:

Phone No:

Address:

Clinic/ Hospital Contact

Name:

Phone No:

Address:

MEDICATION JEXT

Name on JEXT & expiry date:

It is the parents responsibility to supply 2 JEXT pen auto injectors and to ensure they have not expired

Dosage & Method: **1 DOSE INTO UPPER OUTER THIGH**

The school staff will take all reasonable steps to ensure does not eat any food items unless they have been prepared / approved by parents

It is the schools responsibility to ensure this care plan is reviewed and parents inform the school of any changes in condition or treatment.

Agreed by: School Representative.....Date.....

I agree that the medical information contained in this plan may be shared with individuals involved with my child's care and education.

I give my consent for the school to administer my child's Jext pen or the school held adrenaline auto-injector (if my child's pen is lost/forgotten or malfunctions) to be administered in an emergency as detailed in this plan.

Signed:.....Print name..... Date.....

I am the person with parental responsibility

Individual protocol for using a JEXT Pen (Adrenaline Autoinjector)

Symptoms may include:

- Difficulty in swallowing / speaking / breathing
- Wheezy / irregular breathing / excessive coughing
- Hoarseness
- Nettle rash (hives) anywhere on body
- Sense of impending doom
- Swelling of throat and mouth
- Abdominal pain, nausea & vomiting
- Feeling of weakness (BP drops)
- Collapse & unconsciousness
- Cold and clammy

Give JEXT pen first

Then call 999 Administer in the upper thigh

Remove yellow cap, place black tip against upper outer thigh, push injector firmly into thigh until it clicks.

Hold in JEXT Pen in place for 10 seconds.

Can be given through clothing, but not very thick clothing

Note time of injection given

If no improvement then ambulance crew to give

Stay Calm

Reassure

One member of staff to Dial 999

REMEMBER

Call Parents

Reassure

.....

Telephoning for an ambulance

You need to say: "I have a child in anaphylactic shock".

Give school details:

Give details: Child's name has a severe allergy and what has happened.

DO NOT PUT THE PHONE DOWN UNTIL YOU ARE SURE ALL THE NECESSARY INFORMATION HAS BEEN GIVEN

Someone to wait by the school gate to direct the ambulance staff straight to the child.

Protocol for the administration of Paracetamol

- Paracetamol can be administered to children of any age, dose must be suitable for their age and weight
- Verbal parental consent must be gained during the day to administer paracetamol between the start of school day and 12pm. If the parents cannot be contacted paracetamol cannot be administered. Conversation with parent/guardian must be recorded.
- The school can administer paracetamol without additional parental consent on the day between 12pm and end of school day.
- If paracetamol is administered at any time during the school day parents will be informed of the time of administration and dosage.
- The school will keep records of the administration of paracetamol as for prescribed medication.
- Pupils must not bring paracetamol (or other types of painkillers) to school for self-administration.

Use with caution:

- Liver problems
- Kidney problems
- Long term malnutrition
- Long term dehydration
- Epilepsy

SIDE EFFECTS:

- Allergic reaction rash, swelling difficulty breathing
- Low blood pressure and a fast heartbeat
- Blood disorders
- Liver and kidney

Do not administer if the pupil is also taking any of the following drugs:

- Metoclopramide (relieves sickness and indigestion)
- Carbamazepine (treats a number of conditions including epilepsy)
- Phenobarbital or phenytoin (used to control seizures)
- Lixisenatide – used to treat type 2 diabetes)
- Imatinib – used to treat leukaemia
- **Other drugs containing paracetamol e.g. Lemsip, Sudofed, Feminax**

IF YOU SUSPECT AN OVERDOSE CALL 999 IMMEDIATELY. Only 4 dose in 24 hours

*Based on WSCC Model Policy dated December 2021
This policy will be reviewed annually and in line with new guidance*

Do not administer if the pupil is also taking any of the following drugs:

- Other Non-steroidal anti-inflammatory drugs (NSAID's) should not take more than one NSAID at a time
- Anti-depressants
- Beta blockers to treat high blood pressure/migraines
- Diuretics – to remove excess fluid in the body

IF YOU SUSPECT AN OVERDOSE CALL 999 IMMEDIATELY. Only 3 doses in 24 hours